

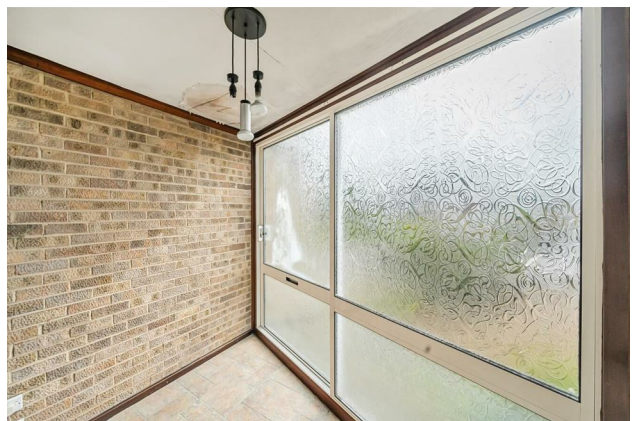
HUNTERS®

HERE TO GET *you* THERE

Knoll Wood Park, Horsforth, LS18

Guide Price £325,000

Property Images



Property Images



Floorplan

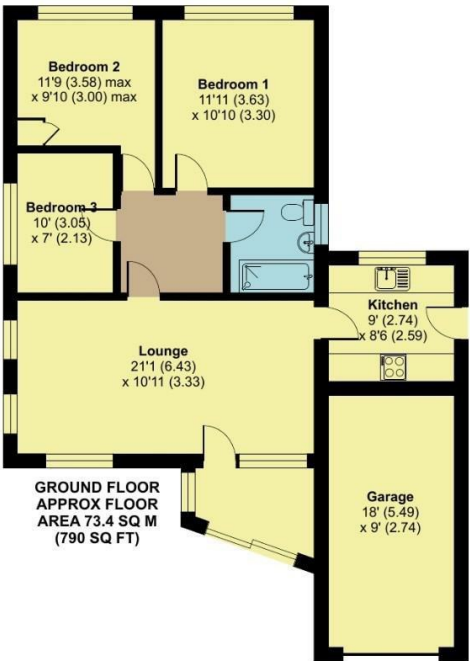
Knoll Wood Park, Horsforth, Leeds, LS18

Approximate Area = 790 sq ft / 73.4 sq m

Garage = 162 sq ft / 15 sq m

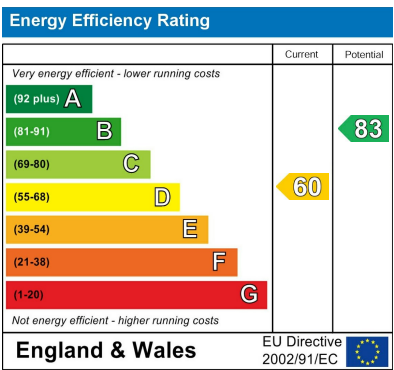
Total = 952 sq ft / 88.4 sq m

For identification only - Not to scale

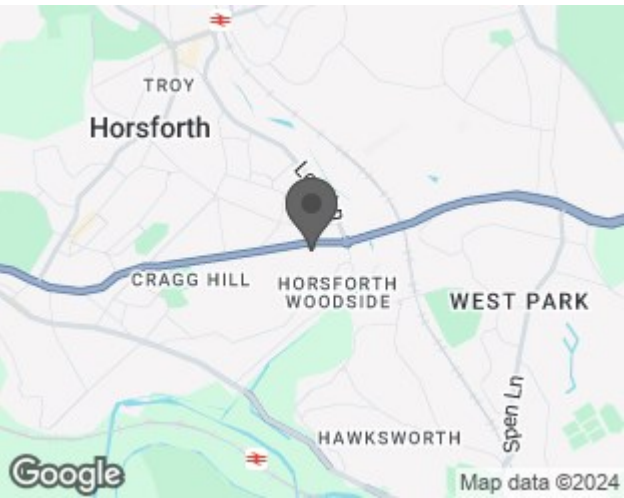


Floor plan produced in accordance with RICS Property Measurement Standards incorporating International Property Measurement Standards (IPMS2 Residential). © nichecom 2024. Produced for Hunters Property Group. REF: 1136303

EPC



Map



Details

Type: Bungalow - Detached Beds: 3 Bathrooms: 1 Receptions: 2 Tenure: Freehold

Summary

This long-time family home offers the opportunity to upgrade and modernise to personal taste and specification.

There are many features on offer:

- Detached true bungalow
- Large plot superb potential to extend (subject to planning permission)
- Full modernisation required
- Superb opportunity to add value
- Spacious lounge / diner and separate kitchen
- Three bedrooms
- Driveway and Garage
- Popular cul de sac location
- Chain free

This blank canvas offers a great opportunity to transform this property into a wonderful loved home once again, to the new owners' exact requirements and specifications. This is a rare opportunity to market and won't be around for long. Don't miss your chance to view, call our friendly team now before it's too late!

Features

• CHAIN FREE • DETACHED BUNGALOW • THREE BEDROOMS • REQUIRES FULL MODERNISATION • POTENTIAL TO ADD VALUE AND EXTEND (subject to planning permission) • DRIVEWAY AND GARAGE • LARGE PLOT • COUNCIL TAX BAND:- E • EPC RATING:- D